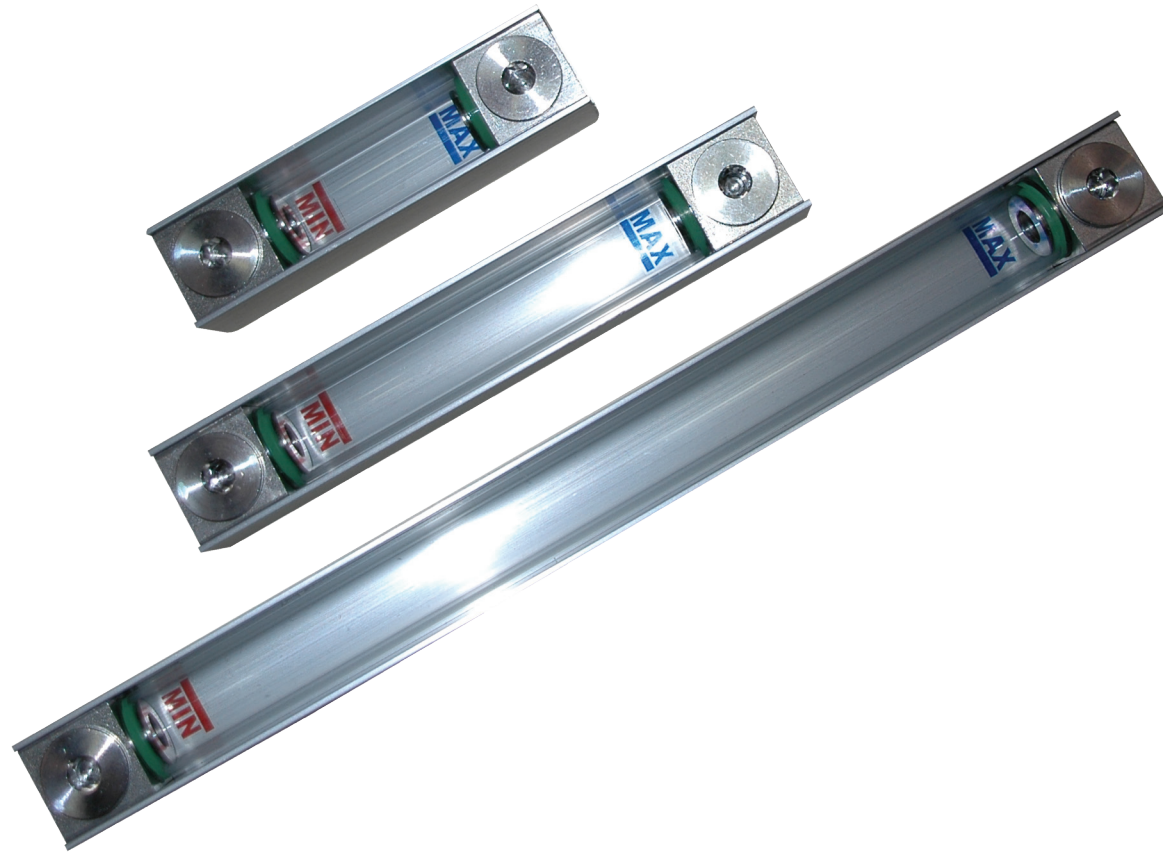


LV/M

MINIATURE VISUAL LEVEL GAUGES 76 - 127 - 254 mm



VISUAL LEVELS

The visual level gauges allow the liquid level to be checked in a clear and precise way at any time, and have the possibility to have an electrical signal.

LV/M

MINIATURE VISUAL LEVEL GAUGES 76- 27-254 mm

Level indicators of **LV / M** series allow to control, at all times, the level of liquid consistently, clearly and precisely.

PRINCIPLE OF OPERATION

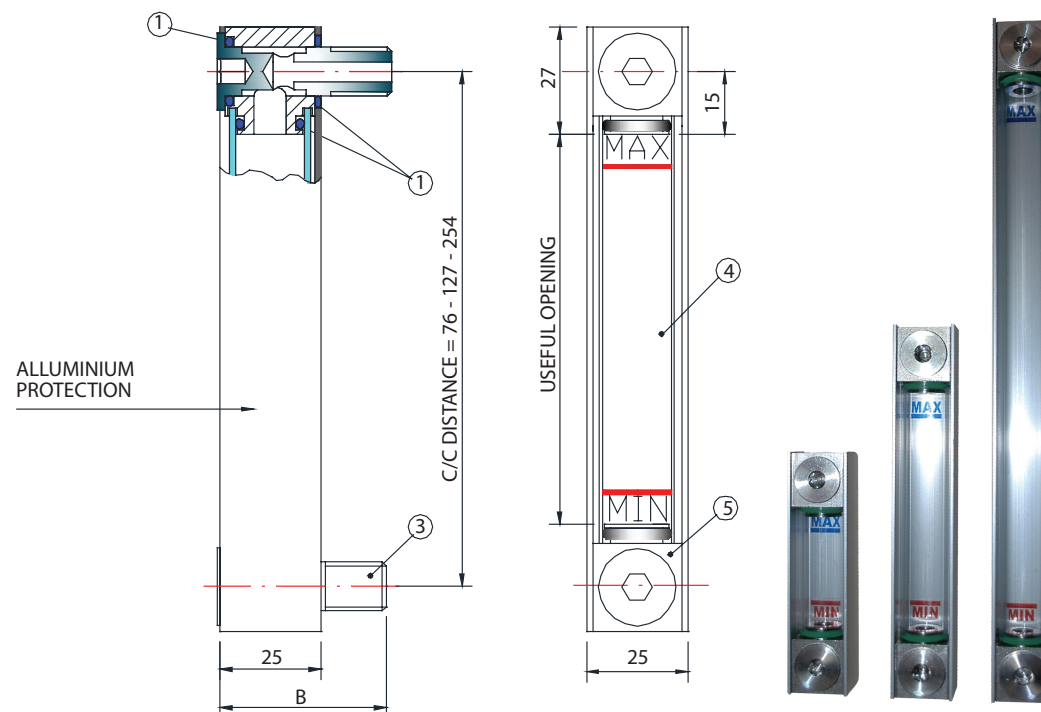
The principle used is that of communicating vessels: the liquid from the container, where the gauge is applied by means of screws, through the hollow transparent tube, revealing the precise point reached within the tank.

OPTIONS

- c/c distances 76,127,254 mm (+ -1), interchangeable with almost every visual levels in the market
- Different polymeric materials used for the transparent tube, blocks and O-ring
- Version of stainless steel AISI 316 in the metallic parts in contact with the liquid

TECHNICAL ADVANTAGES

- Constant and continuous indication of the level of the liquid
- All the handmade article is protected from shocks by using a profile "U" anodized aluminium
- Useful light excellent in relation to the c/c distance
- Not being a rigid handmade article, it is possible to correct small defects of implementation (wheelbase + - 1 mm) and small orthogonal errors.



MODEL	C/C DISTANCE	SCREW MATERIAL (3)				TUBE MATERIAL (4)		MATERIAL BLOCKS LOWER AND UPPER (5)		OR MATERIAL (1)											
					B		TEMP. (°C)		TEMP. (°C)		TEMP. (°C)										
LV/M	76	A	M10	Galvanized steel	37	1	methacrylate	-70...+80	A	NYLON	-30...+130	1	NBR	-30...+100							
				Galvanized steel	42							2	FKM (VITON)	-25...+200							
		B	M12	Galvanized steel	37							2	Polycarbonate	-150...+130	B	Polypropylene	0...+100	3	SI (SILICONE)	-60...+200	
				Galvanized steel	42													4	HNBR	-40...+130	
	127	C	M10	nickel plated brass	37	3	pyrex glass	-70...+250	C	Anodized Aluminum								5	EPDM	-45...+155	
				nickel plated brass	42													6	FEP (FKM-SILICONE) on request for appropriate amounts	-60...+205	
		D	M12	nickel plated brass	37							D	Stainless stell AISI 316				7	MFQ (FLUOROSILICONE) on request for appropriate amounts	-65...+175		
				nickel plated brass	42																
	254	E	M12	Stainless stell AISI 316	42																
	LV/M	127	E		42	3		D		2											